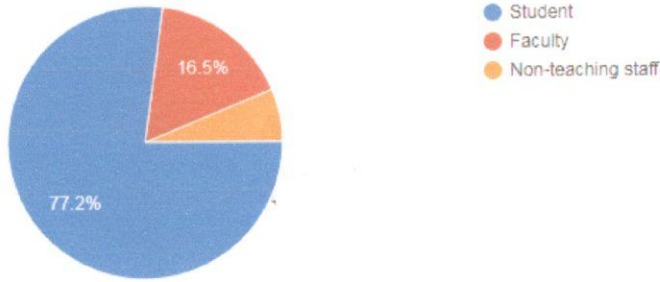


# HAPPINESS INDEX (2022-23)

## Type of Stakeholder

127 responses

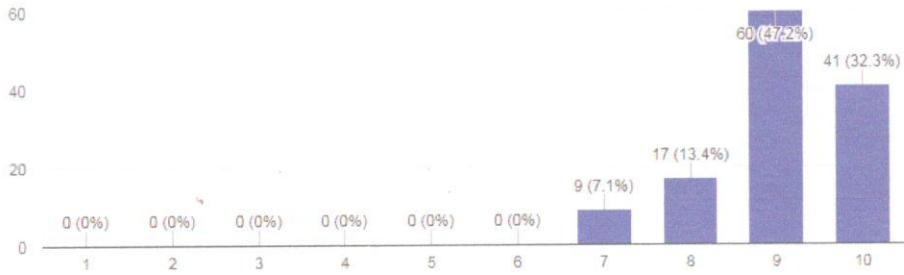


## Domain 1: Institutional Ladder

Imagine the Institute is standing on a ladder with steps from 1 to 10, where 1 represents the worst possible situation, and 10 is the best possible performance of the Institute. On which step of the ladder do you feel the Institute is standing presently?

[Copy](#)

127 responses

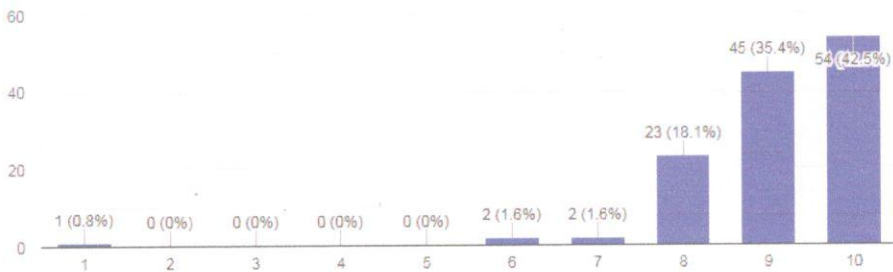


## Domain 2: Satisfaction with Amenities

How satisfied are you with drinking water facility, internet, parking, clean toilet, library books, etc.?

[Copy](#)

127 responses



*B. Saha*

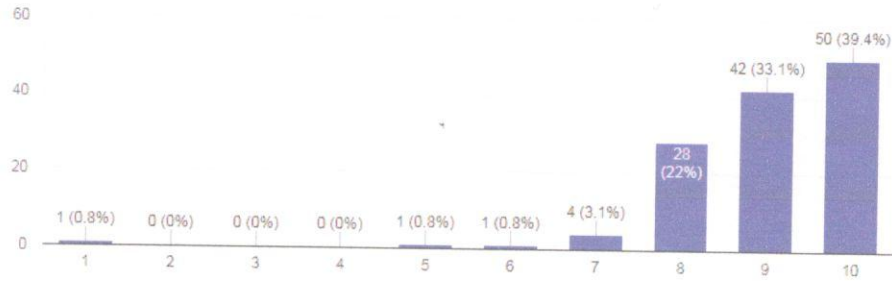
Principal  
Purbasthali College  
Parulia, Purba Bardhaman.

### Administration and Governance

Do you believe that the administration is supportive, takes prompt action, and has an effective grievance redressal system?

 Copy

127 responses

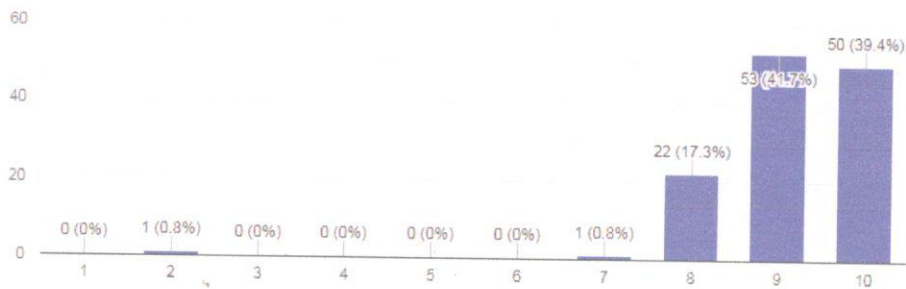


### Promotion of Gender Equity

Are you satisfied with the institute's role in promoting gender equity?

 Copy

127 responses

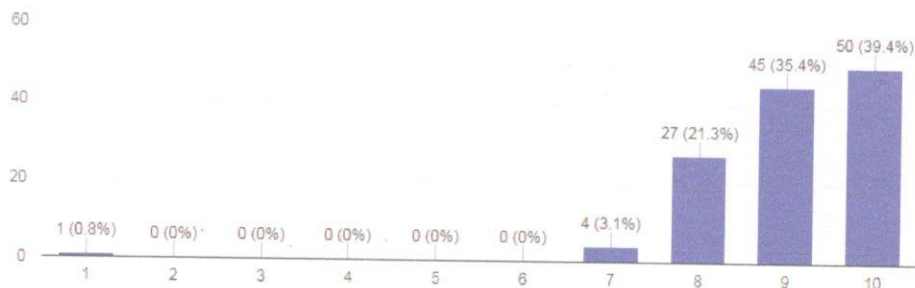


### Conservation of Environment

How satisfied are you with the institute's effort to preserve the natural environment in and around your campus?

 Copy

127 responses



*B. Behera*

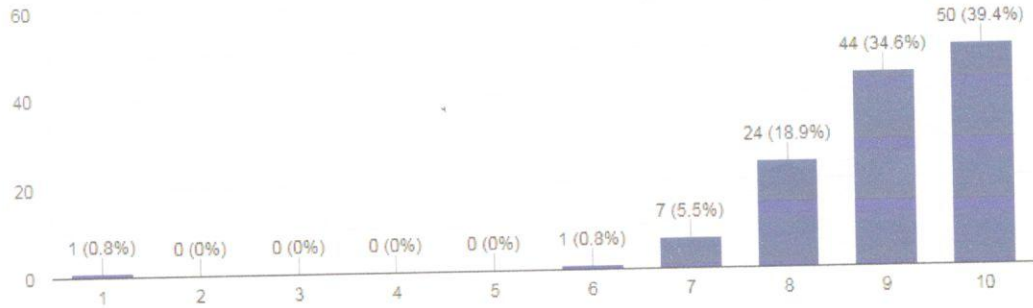
Principal  
Purbasthali College  
Parulia, Purba Bardhaman.

## Community engagement

How satisfied are you with the community engagement of the institute?

 Copy

127 responses

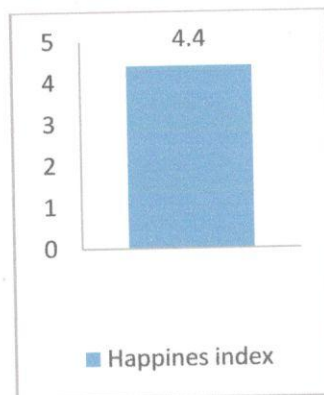
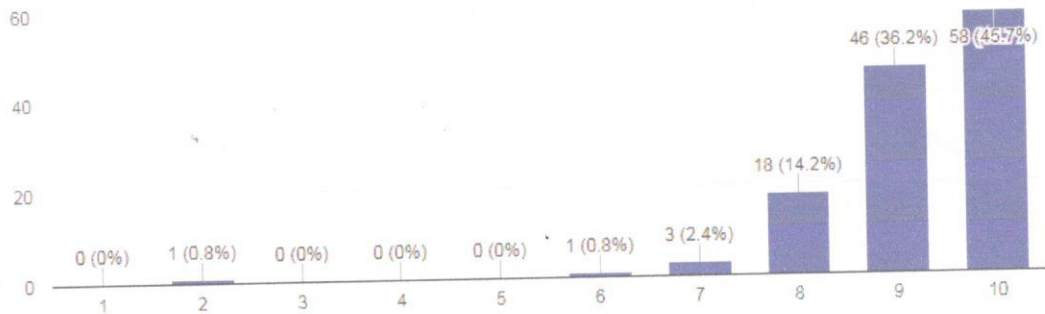


## Campus activities

Are you satisfied with the campus activities, viz sports, cultural programs, recreational facilities, etc.

 Copy

127 responses



*B. Saha*

Principal  
Purbasthali College  
Parulia, Purba Bardhaman.